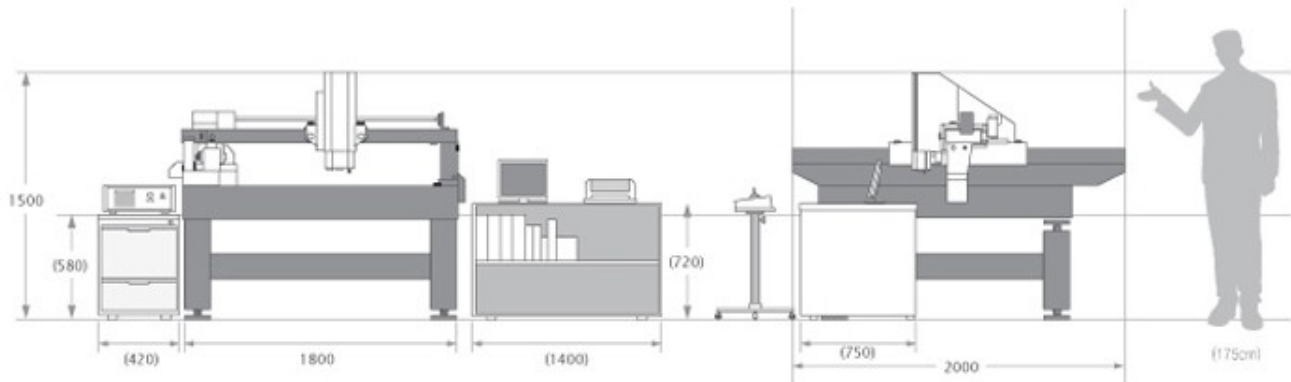


**Dukin DCC CMM**

**Model HIT-V**

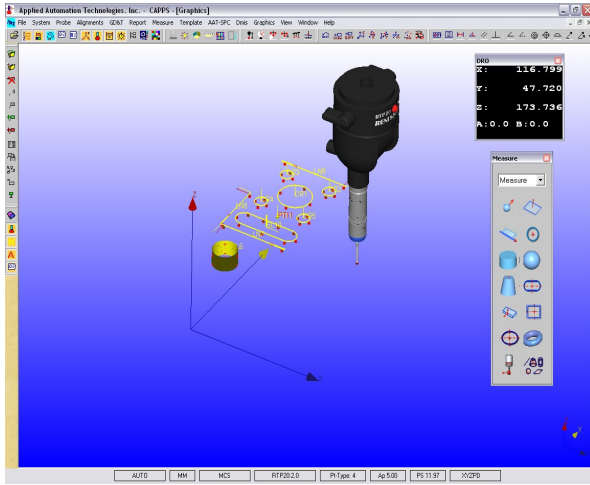
- |                     |                                  |
|---------------------|----------------------------------|
| 1. Style :          | DCC CMM                          |
| 2. Travel :         | Varies (X,Y,Z)                   |
| 3. Overall Height : | Varies                           |
| 4. Table Size :     | Varies                           |
| 5. Probe :          | Varies                           |
| 6. Controller :     | Renishaw UCC2 or DEVA Components |
| 7. Software :       | CAPPS-DMIS                       |
| 8. Frame Type :     | Non-Contact                      |
| 9. Resolution :     | 0.5 / 0.1 um                     |



HIT-V X:1,000 Y:1,000 Z:150

	X	Y	Z
Measuring Range(mm)	300~1,500	300~2,000	50~300
Resolution( $\mu\text{m}$ )	0.5(0.1)		
Maximum Permissible Error	1+L/300 ~ 3.5+L/300		
Max. Velocity(mm/s)	400		
Drive System	X $\square$ Y : Air Bearing Z : High Precision Ball Screw		
Air Requirements(kg/cm <sup>2</sup> ,NL/min)	4, 25		
Vision System	1/2" Progressive scanning CCD Pixel array : 1280 $\times$ 960 FOV : 6.4 $\times$ 4.8mm(Lens 1 $\times$ :Lens dependent) Telecentric Lens		
Motor	DC Servo Motor (All Axes)		
Light System	LED Ring Light (Red or White) LED Coaxial Light (User Optional) Digital LED Controller (RS232c)		
Option System	Back light (Fluorescent) Contacting Probe Laser Displacement Sensor MOTORIZED ZOOM LENS WSI		

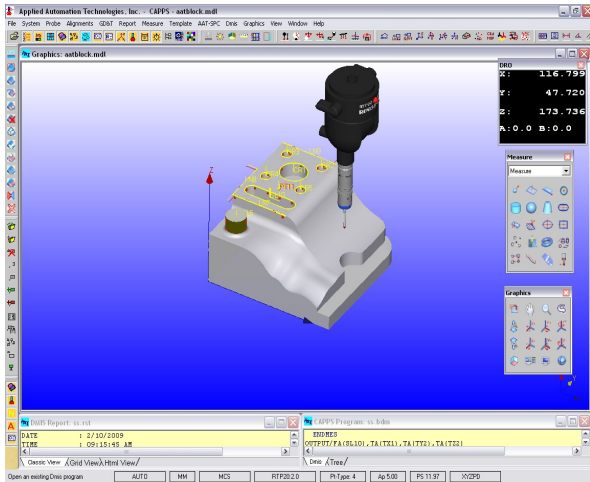
# CAPPS Powerfully Simple



**Capps Powerfully Simple is the least expensive measurement software with complete geometrical measuring capabilities.**

- Complete measurement and GD&T
- Complete construction Methods
- Easy alignment and calibration
- Easy to learn 3D graphics menus and toolbars
- Measurements displayed in 3D
- Easy CAD like 3D graphics with user interaction
- Flexible reporting options with spread sheet like editing
- Scalable digital readout
- DMIS input/output options
- Easy upgrade to Basic Plus or Advanced

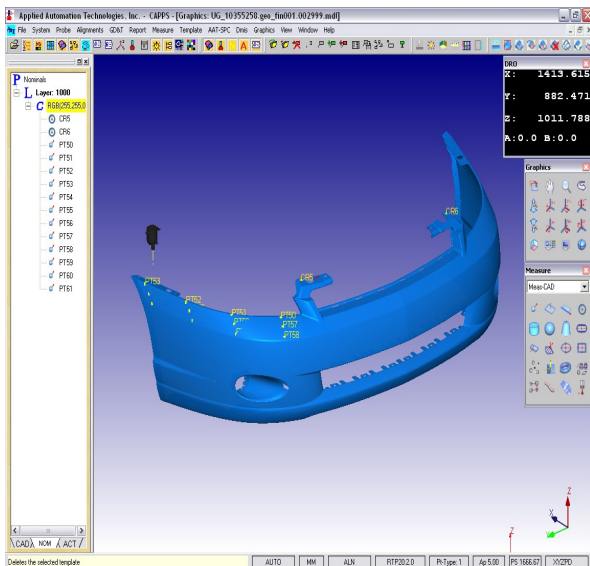
# CAPPS Basic Plus



**Capps Basic Plus is a complete measurement software with CAD capability for geometrical features.**

- Native DMIS programming
- Automatic Probe Calibrations
- MGP CAD alignment macros
- Import and display CAD models with wireframe elements
- Extraction of Nominals from wireframe or create from blue prints
- Adaptive curve scanning
- Reverse engineering to CAD
- Easy upgrade to CAPPS-DMIS Advanced

# CAPPS Advanced



**Capps Advanced is a CAD based metrology software with easy to use graphics. Complete control over mathematical model, easy and precise alignment methods, automatic feature measurements and geometry recognition. Parts can be measured with or without CAD models automatically creating DMIS programs. Features of our Advanced level software include:**

- CAD master model at the CMM
- Automatic collision avoidance
- Auto Probe Calibration
- Advanced CAD operations for surface and curve manipulation
- Automatic probe path generation routines for all geometric and sheet-metal features
- Automatic feature extraction from a CAD model
- Advanced Fixtureless alignment methods with CAD